

ARSCE News

Our President's Message

By Walt North

Wow, what a busy, wonderful summer I have had! And how about you? Good weather most of the time. Just a little hot at times for this Seattle native, but overall things have been very good.

I just finished a Fuchsia Flower Show (one of my interests) at the Locks in Ballard. The show was a success but the entertainment on Sunday was exceptional. The Locks had a free concert by the Greenwood Concert Band. The band is made up of individuals of all ages. The Locks is a good place to spend some time on weekends from June to September because they have many free events open to the public.

The last summer event is Monday, September 6 at 2:00 PM where you will hear the "Dukes and Diva" barber shop singers. For up to date information call (206) 789-2622, ext. 211. If you cannot make it this year, then mark it on your calendar for next year.

Another interest of mine is salmon, especially the salmon in Carkeek Park. The Broadview Green Grid project encompasses a fifteen block area just above Carkeek Park and includes the street where I live.

The project was done to control the water, retaining it in aquifers instead of sending polluted water straight into Carkeek Park. Water retention is expected to be above 90% in the aquifers and new springs are coming up in Carkeek Park. All of this is good for the salmon.

As fall approaches we will be preparing the streams for the return of the salmon, cleaning out debris and broken trees from the channels so the salmon can return and spawn.

Please come down to Carkeek Park the day after Thanksgiving and help celebrate the return of the salmon.

Do not forget about the ARSCE Fall Luncheon meeting at Lake City Elks Club on September 22nd with 11:00 - 12:00 no host bar and time to visit with friends.

Hope to see you there! --Walt



Please come to Carkeek Park the day after Thanksgiving Day and help celebrate the RETURN OF THE SALMON. Did you know that salmon have cycloid scales which have a smooth surface? Over the flexible armor plating of these scales the fish wear a mucous coating which lubricates their body surface and is antiseptic, warding off bacteria and fungal infection. (This last bit of trivia is from "Mark Trail" by Dodd and Elrod in the Sunday PI.)

Inside This Issue

Pension News.....	Page 2
Travel Article.....	Page 3
Old Timers Luncheon Group.....	Page 4
Fellowship All Over Town.....	Page 5
Parks Retirees News.....	Page 5
Transit News.....	Page 6
Library Book Reviews.....	Page 6
Treasurer's Report.....	Page 7
Calendar of Coming Events.....	Page 8
Fall Luncheon Menu.....	Page 8
Membership Application Form.....	Page 8

Welcome, New Members!

Kay Ach, Human Services
 Cheryl Alexander, City Light
 Leroy Alexander, City Light
 Gary Andrews, Police
 Judith Bedell, DCLU
 Gerald Bettis, City Light
 Rudy Blass, City Light
 Tricia Bordeaux, Seattle Public Utilities
 Melinda Brown, Parks
 Steve Chin, Human Services
 David Cook, Fleets & Facilities
 George Criddle, Transit
 Sherry Dicus, City Light

John Diehl, City Light
 Linda Fischer, Fleets & Facilities
 Walter Goldberg, Municipal Ct.
 Reiner Graumann, Fleets & Facilities
 Roy Hart, City Light
 Linda Hein, Parks
 Phil Holmes, Health
 Bill Kolden, City Light
 Tony Kwan, Executive Services
 Alan Leise, Seattle Center
 Robert Liston, Engineering
 Michael O'Halloran, City Light
 Marceo Olegario, City Light
 Mitchell Schwamberg, Executive Services
 Junita Seffato, Executive Services
 John Shadoff, Human Services
 John Sloane, Metro Transit
 Eric Swensson, Seattle Public Utilities
 Yosh Ueno, Police
 Steven Wilson, Police
 Kenneth Wold, City Light

Your Pension News

By Mary Norris
Retired
Employee Member
Of the Seattle City
Employees
Retirement System



Is it possible that Seafair has come and gone for this year and department Stores are advertising "Back to School Sales?" The summer months have evaporated, but we will long remember the many days of sun, heat and the beautiful sunsets of 2004.

We retirees are forever hoping that this year will also bring some relief for the financial hardship of so many of our members. As a Board member, I do marvel at the Investment committee and managers who work so diligently to keep our fund strong and growing to meet present and future needs.. On a daily basis they are looking for greater returns with little risk. It is a big responsibility and challenge, especially in the present business and political climate.

As of June 30th, the estimated current funding level of the Retirement Fund is 86.29%. The first six months have yielded an increase of 3.26%. These are the figures that are watched when a COLA or ad hoc COLA (one time only) are mentioned.

A proposed Ordinance will be presented to the City Council by Richard McIver. Pending their approval it will go to Mayor Nickels for his signature. There are three issues that will be clarified, as follows (in my words.)

- (1.) Two members who are members of the retirement system and one person who is a retired member.
- (2.) In the event that a Board member retires during his or her term they will remain a member until their term expires.
- (3.) The community member will not be a City employee or a retired City employee and shall not have membership in the retirement system.

I was pleased to receive a note from Harry (Gordy) Gordon. He said, "How nice of you to mention Eddie Haw and Russ Teller. They were contributors to the infrastructure of the City Of Seattle and always worked for the improvements for Seattle City employees and the Seattle Employees Retirement System. I feel like a displaced person down here in Oregon and miss you and all of my friends in Seattle." And to make me feel good--"I always read your news in ARSCE News." Gordy retired from Transit in September 1981. Until he moved to Oregon a few years ago, he worked tirelessly for retirees, and he understood the need for a COLA.

Gordy, you will we pleased to know that Eddie Haw attended our August Board meeting, as did Ed Kidd, Walt North, Kirk Jones, Bruce Jones, Ken Yaeger and all of the Board Members.

Enjoy the bounty of the season....tomatoes, corn, beautiful flowers and nice weather.

Next Meeting: September 2nd at 8:30 at The Key Tower.

Ken's Bed

By Ken Hunich

(Ken Hunich's wife of 55 years died a year and a half ago. He is now learning to be a bachelor. This is one of his learning experiences.)

Living alone is much different from living happily married with someone. My wife took care of the bedroom and the bathroom, for example, and I took care of the car, the furnace and hot water tank.

Let's talk about the bed, every house has at least one.

The one my wife and I used brings many thoughts to mind. First, it was a perfect example of how a successful marriage is based on compromise. I accepted the fact that I would spend the night being aware from time-to-time of the beads of sweat trickling down the depression over my breastbone. In turn, my wife accepted the fact that we did not have enough blankets on and she would be somewhat cold during the night.

This was not a recent thing. It was true even when our marriage was new. Since I usually slept on my side, my wife found she could press her body and legs close against mine and be comfortably warm. "You really are quite warm, you know," she would say. In those days, when she wasn't aware of it, I took yet another blanket off the bed --- with even better results.

I don't think Shirley was different from other women who are concerned about how their house looks. The bedroom curtains were changed more than once to get the right effect. The bedspread and accessories had to be appropriate and color coordinated. Everything had to be in it's place. Admittedly it did look neat, colorful and, well, feminine.

But when we were expecting company, she always closed the bedroom door. Perhaps while I was getting dressed for company I passed through the door and left it open. If so, I was immediately reminded to keep the door closed: "I don't want anyone to see into our bedroom." A question of logic flashed through my mind, but in experience learned from marital living I said nothing and made sure the door was closed.

When she died I made the bed just as she had done earlier. However, when my eyes didn't water so much and I began to think about something except how sad I was, I began to look at things around the house and wonder why they were being done in a certain way. Making the bed was one of those things. Realizing how long it takes to make the bed each day, I decided this needed thought and analysis. First, I noticed how many times one has to walk around and back again to move the bedding to where it should be and to be sure it was wrinkle and fold free. What you did on one side of the bed invariably undid what you had just accomplished on the other side, requiring yet another trip around the bed.

Now I was trained as an engineer, so it is normal to approach a problem in a manner based on facts, figures and logic.

In the usual procedure you take off the sleeping pillows and pile them atop the telephone on the nightstand --- and hope nobody calls. Next, you pull up and smooth out the top sheet and blankets. Then up comes the bedspread, smoothed and with the top folded back. Next you take the sleeping pillows, one at a time, and whack the heck out of them, presumably for some transgressions they made while sleep was under way. Then you place them properly plump and rounded side-by-side at the top. Then the bedspread top is pulled up to cover the pillows and partially tucked in a neat fold under the pillows' bottom edge. The final "piece de resistance" are two decorative pillows placed on top of the bedspread, partly over the sleeping pillows, slightly overlapping one another. No, no, don't overlap them too much! Oh, holy cow!

The analysis should also take into account the efforts that must be taken each evening just to get into bed. I figured the size of a double bed. I decided that when working on the bed, one walked 12" away from the bed's edge. I found to walk from the headboard on one side, around the end and to the headboard on the other side was a distance of twenty-one feet one way. I estimated that it took between 5 and 9 one-way trips to make the bed in the usual way. Five trips are 38,325 ft. per year; seven are 53,655 ft. per year; and nine are 68,985 ft. per year. I figured seven trips was fairly typical for the morning work. That's ten miles a year walking around the bed to keep it made. And it helps to explain why the carpet is showing signs of wear.

For me, no way, Jose! It's gotta be simpler and quicker.

No pretty bedspread or decorative pillows! The sleeping pillows get massaged a little where they lie on the mattress, then put approximately side by side. The sheet and blankets go over the pillows, the blanket folds are smoothed out, and you are done!

One problem presented itself though. During sleep the blankets and sheets got pulled to one side. Though the made bed was smooth and neat, the blanket's side edge sloped up or down. To address this I marked all top sheets and blankets with a neat black mark at the middle of the edge. Consequently, I now first pull up the marked points of the sheet and blankets to the top/center of the bed, then smooth my half on top. I go around to the other side and make up the other half of the top, do a few deft pulls on the blanket here and there, and the bed is made --- to what I have determined is neat and adequate. **Continued on Page 8**

Statement of Ownership and Management

1.) Owner and Publisher: The Association of Retired Seattle City Employees.

Address: P.O. Box 75385
Seattle, WA 98175-0385

2.) Title of Publication: ARSCE NEWS

3.) Frequency of issues: 6 issues a year.

4.) Walt North, President, (206) 365-5416
Robert N. Graham, Vice President, (425) 432-1717
Joanne Kinsella, Financial Secretary (206) 362-0902
Marlene Mowry, Recording Secretary (206) 764-4625
Nancy Jo Ceccarelli, Treasurer (206) 525-5942
Virginia Jacobsen, Editor (206) 937-4782

5.) Bondholders, Mortgages and Security Holders: None.

6.) The Association of Retired Seattle City Employees (ARSCE) is a non profit organization for educational purposes according to section 501c(3) of the Internal Revenue Code. Contributions are tax deductible.

ARSCE dues are \$8 a year, July 1st through June 30th.

Opinions stated by various writers are their own and do not necessarily reflect the policy of ARSCE.

Los Torres Del Paine

By Verda Hansberry

The flight from Santiago, Chile, south to Punta Arenas was a long one with my arrival around 10:30 p.m. It was very windy when I got there, and I learned soon that one should be prepared for wind and rains that far south. I spent the night there and left about 9 a.m. by bus for Puerto Natales. There were ranches and much open space along the way. We could see the Andes in the distance.

Puerto Natales is a very small town situated on the Fjordo Seno Ultima Esperanza (fjord Last Hope Sound) and is the gateway for trips to see the glaciers and to Los Torres Del Paine National Park. My free afternoon was spent walking around the town, looking at the outside mural depicting early Indian history and culture of the region, and visiting the local museum. I had arranged for a boat trip up the fjord to see the glaciers Balmaceda and Serrano the following day.

I picked up my box lunch at the hotel desk the next morning and walked about 2 blocks to the dock to catch the boat. There were approximately 40 people on board from all over the world. The man across the table from me was from Mexico and spoke English, thank heavens, and translated the announcements that came over the loud speaker. At first we saw cattle ranches (estancias), but later the views were of water birds, waterfalls and high glaciers. I had lots of film and spent most of my time out on deck photographing the mountains, some partially covered by clouds. We passed a cormorant rookery that was of great interest. We were supposed to see a sea lion colony, but none were visible. Along the way we ate our box lunches.

When we finally got the Balmaceda glacier we found that it has been in retreat for 15 years and no longer is at sea level. None the less it was a magnificent sight with its blue ice. The boat docked at Puerto Toro and we got off for a walk through the forest to the base of the Serrano glacier. After about a half hour we arrived at a small lake with icebergs in it from the calving glacier. It was a wondrous sight to see all the blue ice all the way up Mount Serrano. By that time the sun was shining which added to our pleasure. We then returned about 4:30 p.m. to Puerto Natales where I spent another night.

The tour bus for Torres del Paine picked me up about 8:30 a.m. the next morning. About 20 of us were packed in it. Our first stop was at La Cueva del Milodon with its large statue of the milodon. In 1890 the well-preserved remains of an enormous ground sloth were found in this cave, and this is a full-size replica (or what was imagined as being the replica) of this animal which became extinct near the end of the Pleistocene era. It was twice the size of a human and was an herbivorous mammal that pulled down small trees and branches for their succulent leaves.

On the way north we began to see the peaks and towers of the Torres del Paine Park. Cavier, our guide, pointed out a small cabin where Gabriela Mistral (Nobel prize winning poet) vacationed. Near the entrance Cavier pointed to a condor circling way up in the sky, and later we saw a young condor at rest on the edge of a cliff. There were several gray foxes at the entrance to the park. They stayed around there because tourists waiting to get into the park often gave them food. I was able to get some excellent snapshots of them.

The Lonely Planet guidebook "Chile & Easter Island" by Wayne Bernhardson gives this description:

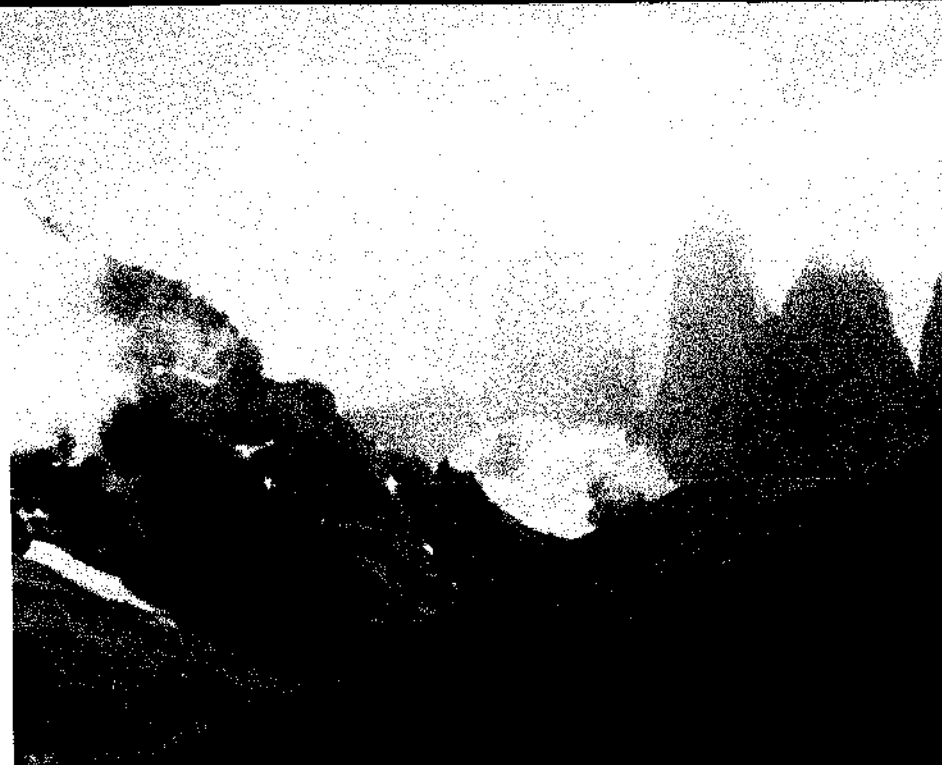
"Soaring almost vertically more than 2000 meters above the Patagonian steppe, the Torres de Paine (Towers of Paine) are spectacular granite pillars that dominate the landscape of what may be South America's finest national park, a miniature Alaska of shimmering turquoise lakes, roaring creeks, rivers and waterfalls, sprawling glaciers, dense forests and abundant wildlife. The issue is not whether to come here, but how much time to spend. Since 1978, it has been part of the United Nations' World Biosphere Reserve system." That description is so very true.

Soon we were seeing herds of guanaco (related to the camel family) and stopping often to take pictures. There are many campgrounds here and we found them well used by horseback riders, hikers, and backpackers. There were lots of tents, but they also had showers and in some places a small store selling supplies. Rain gear is a necessity as are windbreakers. Many mountain climbers visit here.

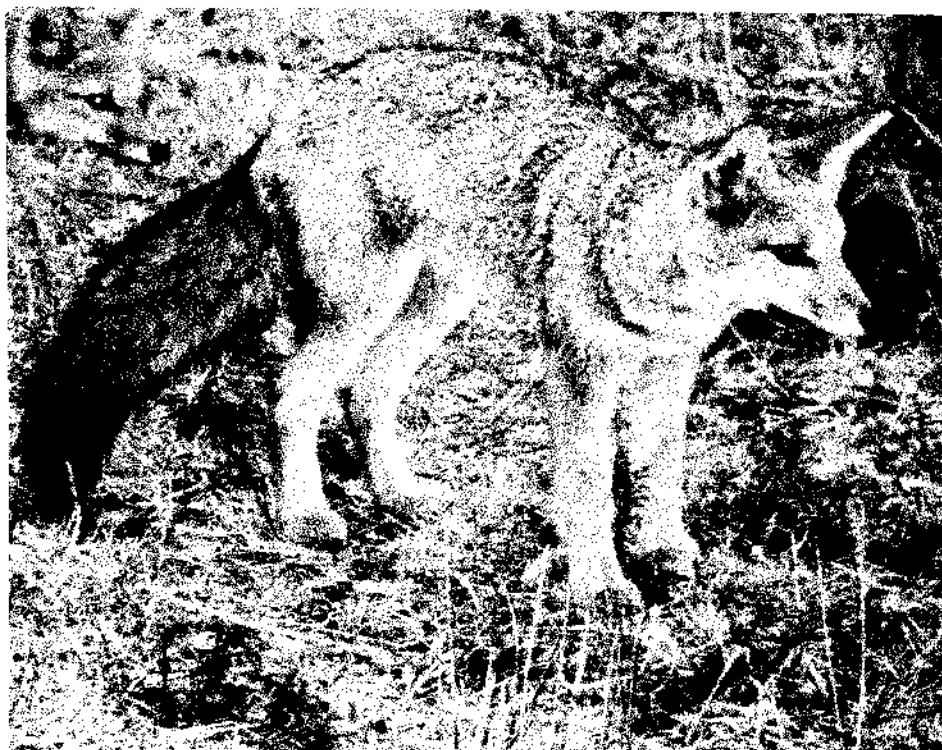
The lakes were beautiful. Some were turquoise, some green, and some were a brilliant blue. All were gray when the clouds rolled over. Our first major stop to look at the mountains was at the Paine Massif where the Cuernos (Horns) del Paine and Cerro Paine Grande were facing us. They are spectacular! Ice, snow, wind and water have sculptured these peaks into fantastic shapes, and the layers of granite are of different colors adding to the beauty of the scene.

We ate our box lunches at a small picnic area and headed on to Grey Lake (where I was originally scheduled to stay at the Hosteria). This was a wintry scene. An icy lake with a few icebergs floating in it, and a glacier ending at lake level. A walk was scheduled there to get closer to the glacier, but when I got out of the bus, the wind was so strong that I decided walking could be hazardous for me. Eric, from England, agreed, so we went into the Hosteria for cups of tea while the others hiked. We had a beautiful panoramic view of the Cuernos from the lounge area.

Continued on Page 4



Los Torres del Paine (Towers of Paine) as always seen through the clouds. (All photos by Verda Hansberry.)



The gray foxes hang around where they can beg food from the tourists.



Guanacos in a field. They are relatives of camels.



Eda's Birthday Cake

By Eda Anthony

All I wanted for my birthday, my 80th birthday, was a birthday cake. I didn't expect nor did I get a party of any sort. But I did want a birthday cake. Maybe that sounds petty, but at 80, you're entitled. At 15 I was given a choice and I chose pumpkin pie, probably because my birthday comes right after Halloween. But at 80 I wanted cake.

Now I guess being 80 is a special milestone in life. Several of my friends had reached that milestone and with their families celebrated in various ways. One greeted friends at an afternoon tea; another at a party on the Queen Mary in California. Another had a party that included an Elvis or Nixon impersonator. (Is there a difference?)

One friend was honored with a dinner party attended by 20 or 30 relatives and friends at a popular restaurant. I was especially happy to be included because it was for a long time friend, both of us having been born in Seattle a day apart. I enjoyed hearing about or attending these festivities, but for myself, all I wanted was a birthday cake.

When my husband was alive I could always count on a cake, but he always needed a little reminding. I refused to hint, wanting to see if, for once, he would remember on his own. Invariably someone (usually my father) would remind him and Johnny would have time to get a present, a card and most importantly, a cake. Although, come to think of it, the card was probably the most important because he took pride in finding one that best expressed his feelings for me.

Once I was a bit taken aback when Johnny brought home a cake which said "Happy 50th Birthday, Eda!"

I have never made a secret of my age. I knew that the bakery often put cakes in the display window before they were picked up and I figured there were probably lots of wives out there who wouldn't want their age displayed that way, but anyway I was probably the only 50 year old named Eda who was celebrating a birthday. I had a good laugh over it.

In later years the ritual was that my husband and I and my sister and her husband would go out to dinner, then back home for birthday cake.

Now our husbands are gone but my sister and I keep up the tradition by going out together. The day of this particular birthday, my 80th, started well, November 2, 1998. Trouble was Ellen had a cold that had hung on and on so I was left to celebrate alone. I didn't mind. All I wanted was birthday cake.

That day the City Council was scheduled to act on a COLA. So I, along with many ARSCE members who had worked long and hard toward this goal, attended and were overjoyed that the COLA was granted.

It took awhile to realize this was only a partial COLA and we had a long way to go. (In 2004 many of us are still waiting.) Still it was a fine way to celebrate my birthday.

As long as I was in town I stopped by to see some of my former co-workers at the Water Department. Also in the same building was the Engineering Department where I went to see my brother and he took me to lunch at the Metropolitan Grill to celebrate my birthday. That was a pleasant surprise. He, my sister and I usually got together for lunch some other time of the year when we celebrated all three birthdays at once.

I was having a good day, but I guess I am never satisfied. I still wanted a birthday cake so I stopped at Safeway on the way home. I picked out a cake and asked the clerk to decorate it for a birthday. She wanted to know what to write on it. So I said, "Just put Happy Birthday on it!" Then I laughed and said, "Might as well make it Happy Birthday, Eda!"

That should be the end of my story but when I got home I had a message from my sister. She was feeling much better and wanted to go out for dinner. So we did.

Then we came home and I blew out the candles and ate my birthday cake.

Old Timers Luncheon Group MTD/DAS/ESD

By Jerry Robertson

The Old Timers Luncheon Group continues to meet the first Monday of each month at the "Old Country Buffet," 4022 Factoria Square Mall, S.E. Bellevue, WA, at 11:00 AM.

Our June luncheon was attended by twenty and also the July luncheon had twenty attendees. It was great to see Dave Cook and Reiner Graumann, and their wives at the June luncheon. A hearty welcome to them and I hope to continue seeing them at the future luncheons. They both seem quite pleased with their life in retirement, as do the rest of us.

As I mentioned in the last article, Terry and I attended the Great Northern Railroad Historical Society Convention in Spokane, WA. The headquarters hotel was the Ridpath Hotel in downtown Spokane, near the Amtrak station. Terry and I stopped in Quincy and visited Jim and Edie Stubbs on our way to Spokane. Edie had recommended their place as an excellent rest stop, and she was indeed correct. We had coffee and goodies and a nice long visit with them before continuing on our way. Thanks again to both of them.

Joe and Lillian Yamamoto completed their annual shad fishing trips to the Columbia, and Lillian reports they had pretty good luck and a great time, meeting up with old friends from past years and making some new friends also. Lillian reports she canned three pint jars short of fourteen cases of shad, as a result of their fishing trips this year.

On Monday, July 26th, 2004, Gene Lucas, Al Nikolaisen, Bill Peterson, Earl Rouleau, and myself attended a memorial service for Howard King (South Service Center Garage, retired). Howard passed away July 20, 2004 at the age of 90 years young. Also, on the health and welfare side, I was informed Arne Smedsrud suffered a stroke and was hospitalized.

Remember the luncheon on the first Monday of the month!
FACTORIA OLD COUNTRY BUFFET 11:00 AM

Los Torres Del Paine Continued from page 3

From there we went to Laguna Amarga where I transferred to another bus to go to Hosteria Las Torres where I spent the night. The bus had to cross a river on a very narrow bridge with about 2" of clearance on each side. As we crossed I wondered if we would make it. All along this bumpy dirt road we could get wonderful glimpses of Torres del Paine, that beautiful mountain I had traveled so far to see. However, the Hosteria was in a valley and I couldn't see the Torres from there. The clerk at the desk said that if I walked back about three quarters of a mile I would be able to see the mountain. So I trudged back there and saw part of the mountain, but the clouds covered the tops of the towers. Dinner that night was a buffet that cost about \$22, but it was very good.

It rained hard that night, but I got up at 6 a.m. to see if I could get any pictures of Torres del Paine as the sun struck it. I took lots of pictures, but clouds always obstructed parts of the tallest tower. There was heavy rain after breakfast, so I packed to leave after lunch for Laguna Amarga and was met there by Clavier and Patricio with a car to take me over to Laguna Azul (blue lagoon). It was a great afternoon. They would stop the car anywhere I wanted so I got wonderful pictures of the Paine falls, and guanacos as well as of Torres del Paine. They delivered me to the bus station in Puerto Natales where I caught the bus to Punta Arenas, spent the night there, and flew to Santiago the next morning.

What a wonderful experience!



Jerry Coupens celebrating his 81st birthday on July 9th. Look at that beautiful cake! (All photos from Pat Coupens.)



Debbie Skaw at the July, 2004 Parks Retirees luncheon.

Parks Retirees News

By Pat Coupens

Hasn't this been a beautiful summer! A bit uncomfortable at times from the high temperatures, but the flowers have flourished from all the sun and warm weather. We have enjoyed being able to eat dinner on the deck many times. Usually it cools off around 6 o'clock and gets too cool.

Parks News

Walt & Mae Lindlauf drove down the coast to Spirit Mountain for 3 days in July. They had nice weather all the way down and enjoyed the trip.

Ray & Dorothy Wineinger left the 29th of June accompanied by their daughters, Gail and Pam, and flew to Iowa via Chicago and then to Omaha where they rented a car and drove to Iowa and visited with relatives and friends for several days. Their return trip was Omaha to Dallas and back to Seattle on July 8th. They did not encounter any tornado warnings this year as they did last year.

Russ Bean left July 20th to go camping on the Chiwawa River near Wenatchee with his family for their annual camping trip for 13 days. He said they were about 18 miles from Icycle Creek where the recent forest fires were. They saw a lot of deer that had come from the Icycle Creek area. Russ plans another camping trip the latter part of August.

New Retirees

We want to welcome two new retirees who were at recent Parks luncheons.

Debbie Skaw retired on medical disability. She worked out of Roy Street. Her husband also works for the Parks Dept. out of Lincoln Park. After she retired she and her father drove to New York to visit a brother and other family members. Their trip covered 8,200 miles.

Malcolm Boyles retired in March and had worked at the Recreation Community Centers.

We hope they will continue to come to the monthly luncheons.

Our Parks Retirees Christmas Luncheon

I know it's a long way off, but we will probably need to change our December Christmas Luncheon to the third Wednesday of the month (December 15th) so that those of us who want to attend the ARSCE Christmas Luncheon on December 8th can do so. So mark your calendar for December 15th for the Parks Retirees Christmas Luncheon.

Fellowship All Over Town

Water Department Office Workers: (spouses and others are welcome) have luncheons which are organized by Eda Anthony. Contact Eda at (206) 932-2832 for the time and place of their next get-together.

Engineers Luncheon: Retired County and City Engineering people meet for lunch quarterly at the Lake City Elks, at N.E. 145th Street and Bothell Way Northeast. In 2004 we will meet on June 4th, September 3rd and December 3rd. Call Jim Coover at (206) 242-6011 for more information.

City Light Line Crews & Friends Breakfast: This group meets at Denny's at North 155th St. & Aurora Ave. N. on the first Thursday of the month at 8:30 A.M.. Call Bud Eickstadt at (206) 362-8336 for information.

RCLEA (Retired City Light Employees' Association) Lunches: If you retired from City Light, you should be receiving the Newsletter sent out at regular intervals which lists the dates and locations of the informal luncheons and the more formal Fall and Spring Luncheons. For information on this contact Albert Larsen at (206) 525-6682 or go to WWW.Rclea.Com.

Retired Range Service Men meet at the Aurora Restaurant at 9:00 A.M. on the second Wednesday of the month.

Seattle Transit Breakfast (North End): This group meets at Mr. Bill's located at North 130th Street about two blocks west of Aurora Ave. N. Contact Vern Brinden at (206) 784-6907.

Transit Retirees (South End): Meet at the Denny's located in Burien at 1st Ave. South and S. 148th Street on the third Saturday of the month at 8:00 A.M. for breakfast. Contact Al. Ramey at (206) 243-8504 or Whitey Rickert at (206) 264-7131

Traffic Engineers: This group meets on the third Wednesday of the month at North 87th Street & Aurora Ave. N.

Seattle Transit Mechanics & Supervisors and All Retirees Lunch: This group meets the second Wednesday of the month at 11:00 A.M. at Andy's Diner on 4th Ave. South. Call John Love for information at (206) 242-8665.

Another Retired Transit Group: This group meets the 1st Saturday of the month at 7:30 AM. The place is the Colonial Pantry located at 9627 Firdale Ave. in Edmonds. Just follow the County line (N. 205th Street) West bound to 3rd Ave. N.W. Contact Dave Carter at (425) 673-2481.

Old Timers Luncheon Group MTD/DAS/ESD. This group meets at 11:00 AM the first Monday of the month at the "Old Country Buffet", 4022 Factoria Square Mall, S.E. Bellevue, WA..

Engineering Retirees' Lunch: Engineering Dept. Field Personnel Retirees meet the 1st Wednesday of the month at the "Leilani Lanes", 102nd and Greenwood Ave. N.. Doors open at 11:00 AM. Contact Eddie Haw at (206) 783-8306 for further information.

Parks Dept. Retirees' Luncheons are held on the 2nd Wednesday of the month at the "Leilani Lanes" at 102nd & Greenwood Ave. N., Doors open at 10:30 AM. and lunch is served at 11:00 AM. Contact Jesse Howell (206) 282-5338 for further information.

Building Dept. & D.C.L.U. Retirees: This group arranges lunches and parties from time to time. Also Ann Hanes has a group of Building Dept. women who meet every other month at different locations. She can be contacted at 242-3769.

"The Operations Gang Breakfast": meet on the 3rd Tuesday of each month at 9:00 A.M. at the Yankee Diner located at 5300 24th Ave. N.W. in Ballard. For information call Ray Naud at 938-4756

Health Department Environmental Health Workers and Spouses meet weekly every Saturday for breakfast at 7:30 AM. All Health Dept. retirees are welcome. For information call John Nordin at 524-7837.

The View from the Buses

By John D. Love

Yours truly spent a few days on a trip to Mississippi via Continental Airlines with my daughter and son-in-law. While in Mississippi we ran into some weather and rain storms that would make Washington weather look like picnic weather. One day it rained about six inches. I attended a family reunion of the Love family. Over forty were accounted for and fun was had by all.

I received a note from Dale Bartz. Dale was returning to Seattle from a trip to Minnesota and reports that he saw a lot of the new hybrid buses on the road heading to Seattle.

I have heard from Charlie and Maggie Davis down Grants Pass way. They should be in their house by September. They have been traveling locally and have been to the ocean.

Binnacle List

I received a note from my friend, Harry Gordon, and he wanted to know if I was a boat person because of the heading of my Binnacle List. Before I learned to drive a bus I went to sea and if you went on the sick list you were put on the Binnacle List. I sailed for twenty one years and started driving a bus at age forty.

I also received a note from Dale Bartz. Molly Bach, wife of Larry Bach (Santa Claus) says that Larry has been in the intensive care unit for over ninety days. At this time I do not know what his ailment is.

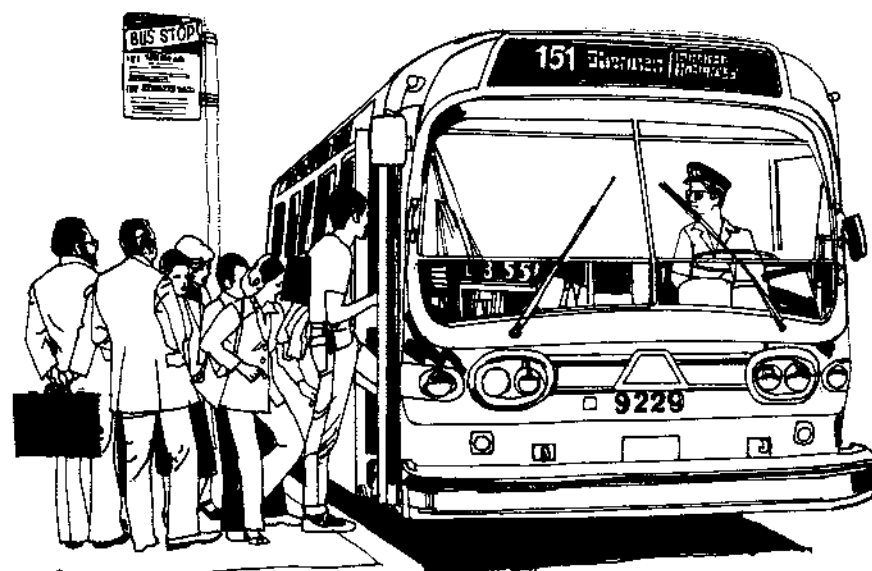
Taps

I have received word that Eugene Adams had passed away. Eugene retired 2/07/79 and was 82 years old at his passing.

Alvin R. Carnahan passed away April 20, 2004. Alvin was 93 years old when he passed away and retired July 1, 1972.

The latest "In Transit" magazine has listed seven Local 587 members in the Memorial section. They are, Richard L. Burnett, Dean T. Dray, Cliff E. Duncan, Walter L. High, Richard W. Leno, Donald R. Meyers and Virgil L. Rakes.

I received a message from Charlie Weeks that Bill Hewett has passed away.



I also received a note from Mrs. Jack Chalfa, sister of Carle Hahne, informing me that Carle had passed away June 21, 2004. Carle and I served on the executive board of local 587 back in the early 1970's. Carle was 89 years old at his passing. He retired January 1977.

I have received a message from Linda Shogren, daughter of Fred, that Fred has passed away. Fred retired August 3, 1976. Fred was a regular at our Tuesday morning breakfasts. He will be missed.

I spotted an obituary for Lanceley (Lance) Pierce in the Seattle P. I. Lance was a thirty year veteran of Seattle Transit. He also belonged to the Musicians Union. Lance played all over town in his younger days. He was also a regular at the Tuesday morning breakfasts.

Arthur McLeod, and Kenneth Nelson have passed away. Arthur was 73 years old and Kenneth was 91 years old.

Our sympathy goes out to those families that have lost loved ones. We should remember that the survivors need support in their time of sorrow and we should extend that support to the best of our ability.

Keep in mind, if you have news you want to share with others call me after 10 AM at (206) 242-8665. Or drop me a note at 3227 S. 184th St., SeaTac, Wa. 98188-4955.

Or E-mail me at Dennerle1@juno.com

That's all for now. --John

Book Notes

By Lorry Garratt, Library

All books reviewed here by Lorry Garratt are available through our Library Systems

SPIES By Michael Frayn

In an astonishing but carefully told account this is a story of WWII in London, of two boys who play and make up spy stories, concocting exciting mysteries about the families in the close where they live. Then the stories turn frightening and the possibility of a German spy in their neighborhood changes the games to terror. A superbly crafted novel of people and their fears against the background of the blitz.

AND JUSTICE THERE IS NONE By Deborah Crombie

The Duncan Kinkaid/Gemma James series continues as Gemma is promoted to the rank of Inspector and Duncan continues at Scotland Yard. They have moved in together, sharing their new home with her son and his. At work their paths converge in the puzzling deaths of two beautiful women and then eventually the husband of one who had been the prime suspect. It becomes a tangled web of old history taking over a modern time.

UP COUNTRY. By Nelson deMille

The term up country, known to so many veterans of Vietnam, describes this story of that tragic war. It is 30 years later and Paul Brenner, a vet and also attached to the Criminal Investigation Division, is called out of retirement to try to solve an old murder case involving a name on The Wall in D.C.. Returning to Vietnam brings back painful memories but there is also a new danger because the old case is explosive and involves persons of high connections in the U.S. government.

THE CAT WHO'LL LIVE FOREVER; The Final Adventures of Norton, the Perfect Cat and His Imperfect Human. By Peter Gethers

The final adventures of Norton, a Scottish Fold breed, and Gethers, a novelist, publisher and screenwriter. Norton's celebrity makes him welcome at the most exclusive hotels, parties and restaurants with the rich and famous. But this is the final book because Norton has succumbed to old age. Utterly charming, especially to cat lovers but perhaps some of the "others" will be drawn in too. **Continued on Page 7**

Golden Contributions

Edward Anderson, Engineering
Ray Baglien, Admin. Services
Paul Bonin, Health
Robert Bonzon, City Light
Robert Branigin, City Light
William Carlson, Engineering
David Cook, Fleets & Facilities
Axel Craft, Engineering
LaDonna Dolan, Comptroller
Donald Duke, City Light
George Dunham, City Light
Reiner Graumann, City Light
Duane Greer, Transit
Eugene Jones, Purchasing
Robert Kupfer, City Light
Angelina Larson, Personnel
Hank Larson, Engineering
George Liapis, City Light
Gene Lucas, Admin. Services
Virginia Magness, Transit
Ray Moen, Transit
Irene Moyer, Beneficiary
Harry Murdock, Transit
Rose Napoleon, City Light
Mildred Navratil, Beneficiary

Barbara Nelson, Health
Frances Ross, City Light
Kenneth Rutgers, Engineering
Bernice Sisson, Associate Member
Jerry Sisson, City Light
Beatrice Stinson, City Light
Marshall Squire, Parks
George Watts, Seattle Center
Thelma Wilkes, Beneficiary

Memorials

Eda Anthony, Water
--in memory of Dorothy Barker, Water
--in memory of Elmer Jacobsen, City Light
--in memory of Clare Maxwell, City Light

Sherry Dicus, City Light
--in memory of Tom Dicus

Gil Green, City Light
--in memory of Elmer Burt, City Light

Barbara Walker, Library
--in memory of Marie Merrill, Library

Where It Comes From, Where It Goes!

Our Financial Report
From Nancy Jo Ceccarelli,
ARSCE Treasurer

The Association of Retired Seattle City Employees operates on a fiscal year, from July 1st to June 30th. The following charts and figures represent the year, July 1, 2003 through June 30, 2004. Just as last year, ARSCE finished the year with a net gain. In addition to an overall decrease in expenses, only one issue of the ARSCE News was 12 pages and the other five were 8 pages.

All Income categories decreased from the previous year, including Donations. All donations received are acknowledged in the ARSCE News under Golden Contributions, are tax deductible and help your organization pay its bills. Along with these donations and memorials, your dues are the main source of income and the ARSCE News accounts for the largest expense.

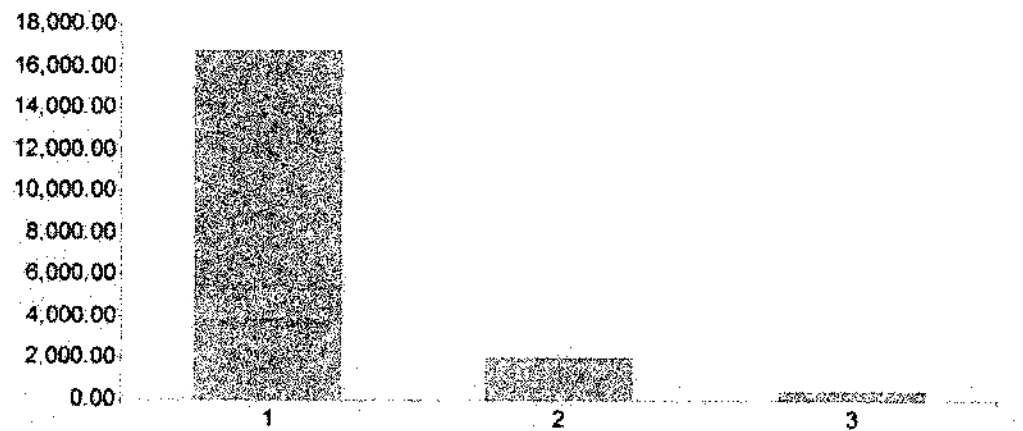
If you have any questions about ARSCE's finances, you can call the Treasurer, Nancy Jo Ceccarelli at 206-525-5942.

1 - Dues	\$16,572.00
2 - Donations & Memorials	2,031.00
3 - Interest	289.68
Total	\$18,892.68

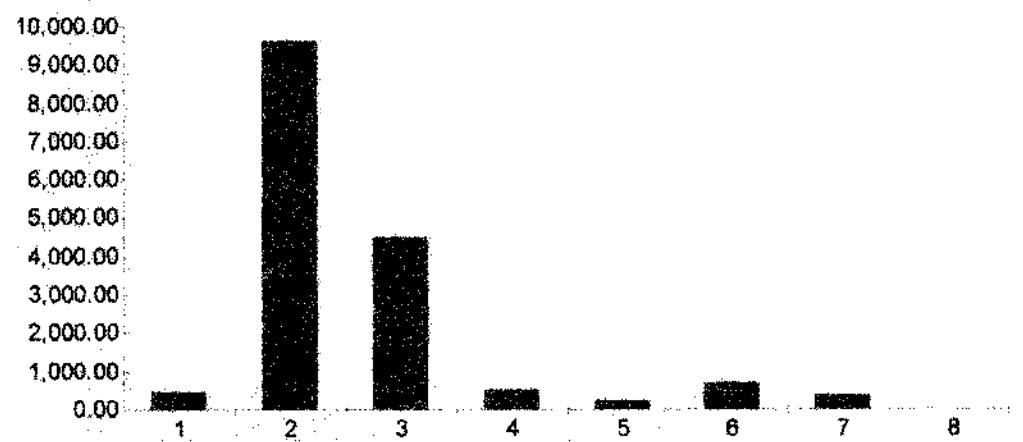
1 - General Expense	\$456.89
2 - ARSCE News Expense	9,624.59
3 - Administrative Salaries Expense	4,500.00
4 - Social Security Tax Expense	495.68
5 - Postage Expense	244.56
6 - Membership Expense	681.05
7 - General Meetings Expense	388.90
8 - Computer Expense	3.62

Total \$16,395.29

ARSCE INCOME 2003 - 2004



ARSCE EXPENSES 2003-2004



In Memory

Note : Names with asterisk (*) are ARSCE members.

Earl Bagwell, City Light*
Retired: 8/86
Died: 4/20/04

Ingrid Baur, City Light*
Retired: 7/01
Died: 5/26/04

John Buckley, Seattle Center*
Retired: 4/88
Died: 5/4/04
Age- 79

Alvin Carnahan, Metro*
Retired: 7/72
Died: 4/20/04
Age: 93

Arthur Cole, Engineering*
Retired: 9/76
Died: 4/13/04
Age: 91

Donald Eastman, City Light
Died: 4/21/03
Age: 82

Johnny Engel, Parks
Died: 3/30/04
Age: 52

Evangelyn Fondell, Library*
Retired: 9/75
Died: 4/7/04
Age: 93

Victor Galbraith, City Light*
Retired: 6/76
Died: 4/29/04
Age: 92

Carl Hahne, Transportation*
Retired: 2/77
Died: 6/21/03
Age: 89

Judy Hudi, SPU
Died: 3/12/04
Age: 53

Frank Kirk, Legislative*
Retired: 12/95
Died: 2/27/04
Age: 77

Book Notes

Continued from Page 6

DELIRIUM OF THE BRAVE. By William C. Harris

A new Southern writer has come on the scene and this his debut novel is rich in detail and characters. Beginning with the Civil War when the wealthy scion of a powerful family is killed, his arms wrapped around his best friend, a family slave who also dies, the story never falters. The two men had just buried the family treasure but didn't make it back to reveal the secret location.

A hundred years later, political intrigues and personal vendettas and the war in Vietnam involving descendants of the two men, keep a fast moving plot on a roll.

THIS COLD COUNTRY. By Annabel Davis-Goff

At the onset of WWII, Daisy Creed is 20, daughter of a Church of England rector. Enlisting in the Women's Land Army and posted to the upper class Aberneth Farm she is courted by two young officers. When she precipitously marries she finds herself living in the south of Ireland at Dunmaine, the decaying estate of her husband's unfathomable family. With her husband missing in action the indomitable Daisy takes on the running of the estate. This is elegant story telling with wit.

THE WAY THE CROW FLIES. By Ann-Marie Macdonald

In a multi-layered story the years of the 60's are seen through the eyes of a Canadian Air Force family. Wing Commander Jack MacDonald, his wife and two children, have settled into a quiet air force base where Jack is second in command.

They seem secure, happy, the perfect family. But world events are encroaching - the space race, defectors, the Cold War, and Jack is caught up in a web of secrets that destroys their lives. At the same time a pedophile teacher is molesting 8 year old Madeleine and her friends and before long there is a murder of a little girl. Macdonald's rich background of time and place make this a splendid read.

Continued on Page 8



**ARSCE
FALL LUNCHEON MEETING**

**Wednesday, September 22nd
At the Lake City Elks Club
14540 BOTHELL WAY NE
11:00-12:00 No Host Bar and Visit with
Friends**

**Music: The Friendly Advice (we hope)
COST: \$15.00 PER PERSON**

RESERVATIONS by Tuesday, September 14th

(Cancellations no later than 48 hours prior to Luncheon)

LUNCHEON CHOICES: (1.)SALMON (2.)FRIED CHICKEN or
(3.)SHRIMP SALAD
Please Mail Your Check and list your choice on Coupon Below.

NAME(S) _____

TELEPHONE _____ ADDRESS _____

CITY _____ ZIP _____

DONATION _____ TOTAL AMOUNT ENCLOSED _____

LUNCHEON CHOICE (Circle) Salmon...Fried Chicken. Shrimp Salad

MAIL RESERVATIONS TO: ARSCE LUNCHEON
P.O. BOX 75385 SEATTLE, WA 98175-0385

**PLEASE MAIL YOUR RESERVATIONS AS EARLY AS
POSSIBLE**

**In Memory
Continued
from Page 7**

Betty Lentz, Personnel
Died: 4/26/04
Age: 78

Margaret McCarthy-Kovach,
Water*
Retired: 1/86
Died: 6/22/04
Age: 85

Arthur McLeod, Metro
Died: 5/18/04
Age: 73

Kenneth Nelson, Metro
Died: 6/28/04
Age: 91

David Reetz, City Light*
Retired: 3/84
Died: 5/9/04
Age: 81

Donald Roberts, Engineering
Died: 3/22/04
Age: 76

Yonetaro Sato, Comptrollers*
Retired: 11/78
Died: 4/12/04
Age: 89

Selma Schau, City Light*
Retired: 4/85
Died: 6/21/04
Age: 83

Dorothy Stewart, Police*
Retired: 12/82
Died: 4/9/04
Age: 90

James Stoddard, Parks*
Retired: 6/92
Died: 2/21/04
Age: 77

James Turner, SPU
Died: 4/15/04
Age: 77

Thomas Webb, City Light*
Retired: 5/84
Died: 5/31/04
Age: 82

Lois Wendt, City Light*
Retired: 8/93
Died: 6/4/04
Age: 71

Frank Wilborg, Engineering*
Retired: 4/73
Died: 4/22/04

Glenn Young, City Light*
Retired: 10/93
Died: 4/19/04
Age: 70

**Meeting & Publication Dates
2004**

Fri. Aug. 27 Mail ARSCE News (Sept./Oct. Issue)
Wed. Sept. 22 General Luncheon Meeting
Tues. Sept. 28 News Deadline (Nov./Dec. Issue)
Fri. Oct. 29 Mail ARSCE News (Nov./Dec. Issue)
Wed. Nov. 10 Executive Board Meeting
Tues. Nov. 30 News Deadline (Jan./Feb. Issue)
Wed. Dec. 8 Annual Christmas Party.

Note: Calendar is subject to change by Board approval.

**Ken's Bed
Continued from Page 2**

Through the review, I determined one of the options was not to make the bed at all. I could just treat getting up in the morning and going to bed at night the same way as a middle of the night bathroom trip. After all, few make their bed before going to the bathroom at night. And who, except me, would see the unmade bed? I don't serve formal dinners, much less have any visitors, especially in my bedroom.

Nevertheless, I decided the bed should be made to give me mental ease. I concluded the most likely reason for that was because my mother had impressed on my mind during my formative years to "Clean up your room and make your bed!"

"Yes, Mother, I did!"

Application for Membership
The Association of Retired Seattle City Employees
Address Change?() Dues Payment?() Donation?() New Member?()

Name _____ Tel _____

Address _____

City _____ State _____ Zip _____

Date Retired _____ From Dept. _____ Amt. Enclosed _____

E-Mail Address _____

Annual Dues: \$8.00. Fiscal year is July 1 to June 30. Dues for Jan. 1 to June 30 are \$4.00.

If you wish to have your dues deducted from your July pension check, please fill out the following section for the Retirement Office and include it with the rest of this coupon when you send it to ARSCE.

**The Association of Retired Seattle City Employees
Dues Deduction Authorization**
To: The Board of Administration, City of Seattle Employees Retirement System:
The undersigned hereby authorizes The City of Seattle City Employees Retirement System to deduct from my retirement, beneficiary and/or disability allowance, such dues as are duly established from time to time by The Association of Retired Seattle City Employees. Until further written notice by me to The Retirement System Office, such deduction shall be made annually from my July allowance and shall be paid to The Association of Retired Seattle City Employees, P.O. Box 75385, Seattle, WA 98175-0385.

Name (Please print) _____ Dept. _____

Signature _____

Address _____

Mail to Association of Retired City Employees, P.O. Box 75385, Seattle, WA 98175-0385 Attn: Joanne Kinsella